

inwi

# INVESTMENT MARKET IN WARSAW

Based on transactions  
between 2011-2019



# INVESTMENT MARKET IN WARSAW - TABLE OF CONTENT

## INVESTMENT MARKET COMPONENTS

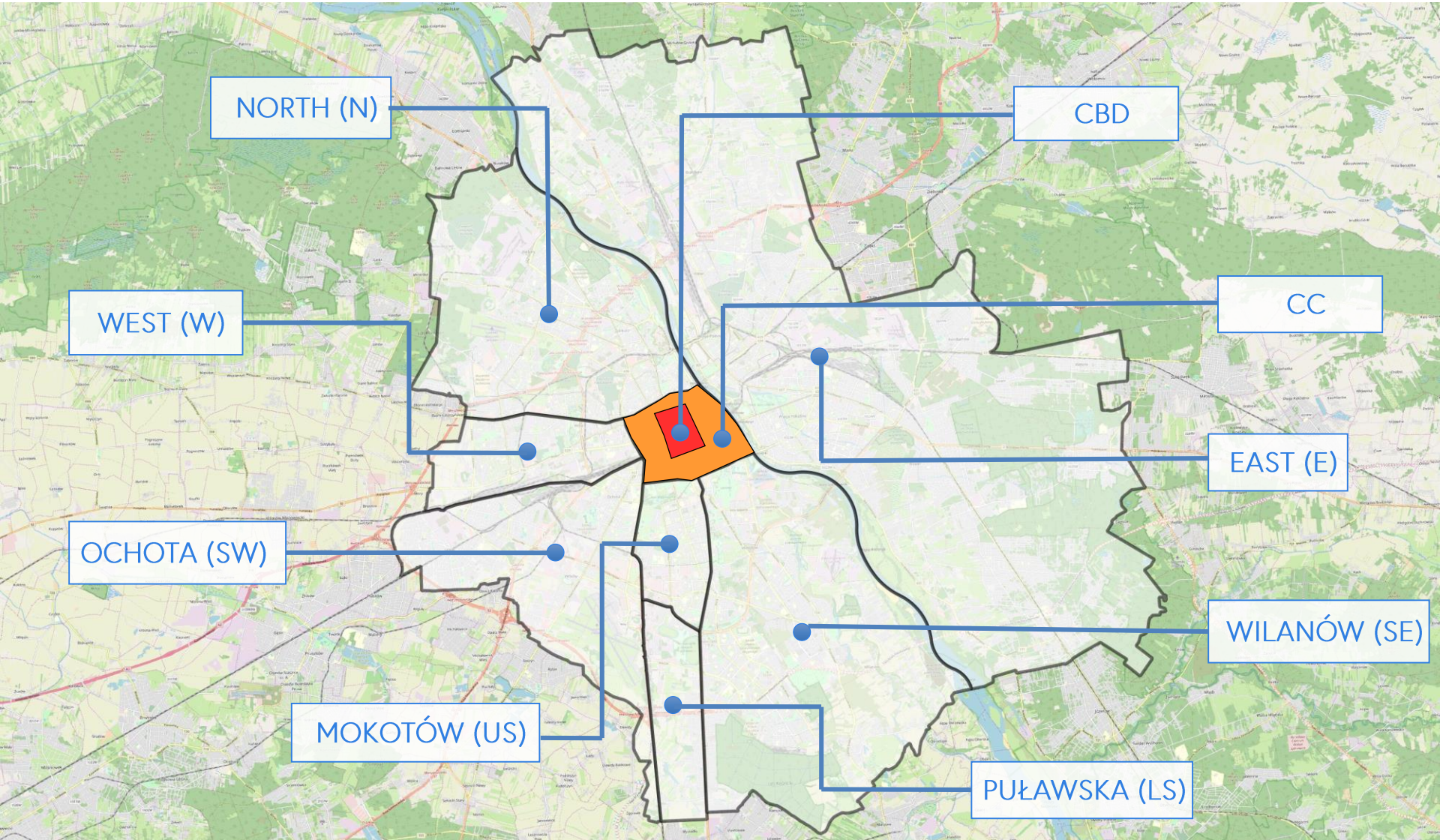
1. Office districts
2. Sum of transactions – by district
3. Headline yield – by district
4. WAULT – by district
5. Price per sqm – by district
6. Headline rent – by district
7. Summary

Attachment: Excel table with all details including yields, net effective rents, headline rents, WAULT, prices/GLA, buyers, sellers, date of transactions

# INVESTMENT MARKET IN WARSAW

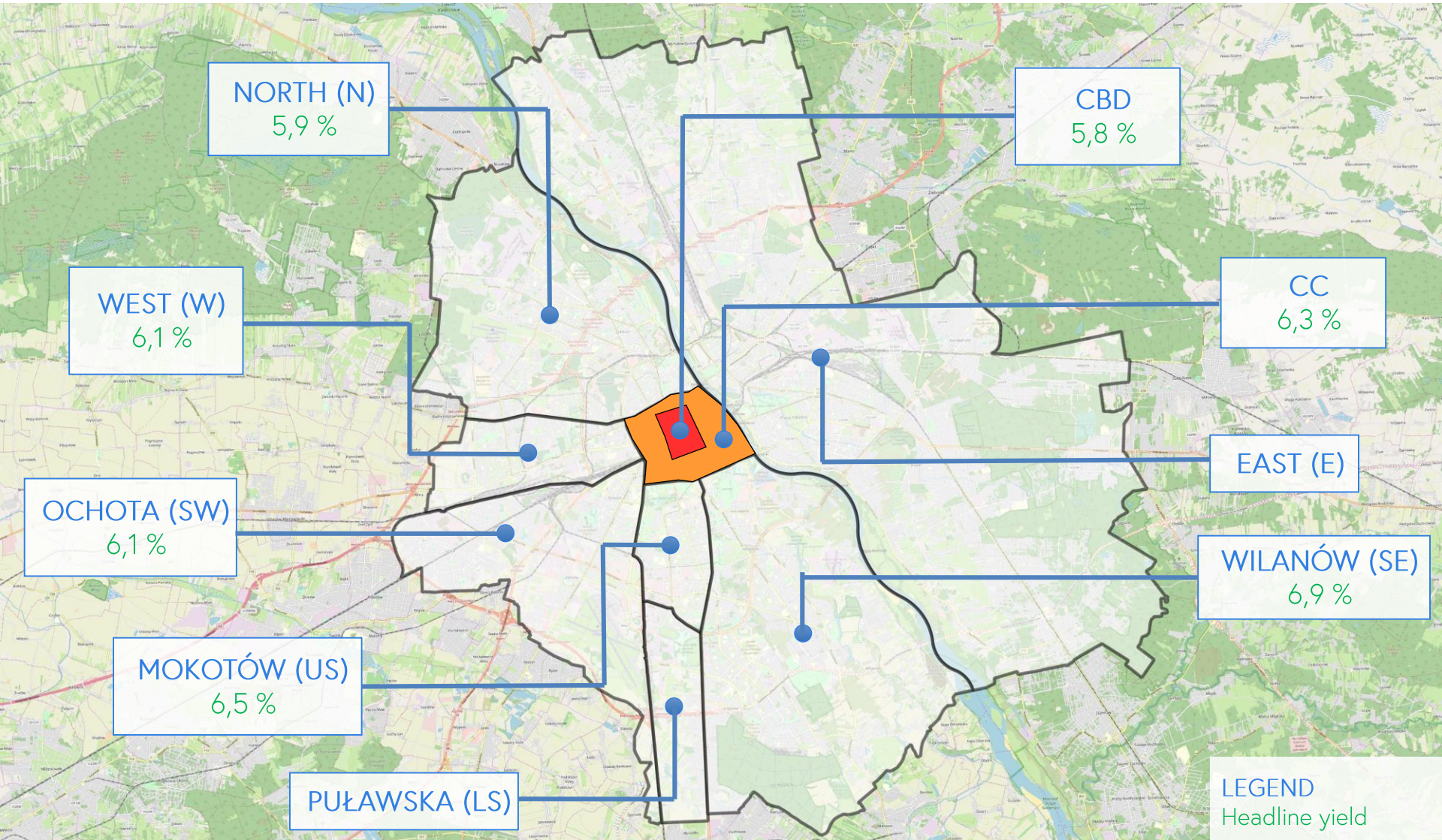


# OFFICE DISTRICTS





# HEADLINE YIELDS



FOR MORE INFORMATION PLEASE CONTACT US:

**Daniel Radkiewicz — MRICS**

**Address**

INWI sp. z o.o. sp.k.  
Zebra Tower (12<sup>th</sup> floor)  
ul. Mokotowska 1  
00-640 Warsaw

**Phone number — WhatsApp**

+48 516 192 856

**Email**

[daniel.radkiewicz@inwi.com.pl](mailto:daniel.radkiewicz@inwi.com.pl)



# ALL RIGHTS RESERVED

---

This whole presentation as well as its individual parts is owned by INWI sp. z o. o. sp.k. and is constituting works as defined by the Act on Copyright and Related Rights of 4 February 1994 (uniform text: Journal of Laws Dz. U. 06.90.631).

No part of this publication may be reproduced, distributed, or transmitted in any form or by any means without a written permission of INWI sp. z o. o. sp.k..

The information included in this publication is not, in any case, a provision of advisory services or any other form of services. Taking a decisive action should be preceded by contacting INWI or other professional advisor that possesses the knowledge on specific factual state in order to receive a proper advice.

Copyrights on the contents of this publication are owned by INWI Sp. z o. o. sp.k. All rights reserved.

INWI sp.z. o o. sp.k. , KRS 0000717744, NIP 7010800415, REGON 369432771